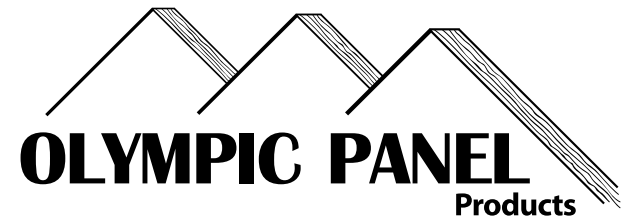




# HOW TO CHOOSE COST EFFECTIVE CONCRETE FORM



Product Brand Name	Barrier Film	Multipour Plus	Multipour	Classic HDO 100/30	Basic HDO 100/30	B-Matte 333 MDO	Basic MDO
Product Description	Exclusive, premium Phenolic/Melamine, White overlaid plywood with superior alkalinity resistance & durability for glossy finishes.	Premium Phenolic surface film, overlaid plywood with good surface durability for high gloss finishes on vertical concrete	Premium, High Density, Buff overlaid plywood with excellent surface durability for semi gloss finishes	Premium, High Density, Buff overlaid plywood with good surface durability for semi gloss finishes	Standard, 100, High Density, Buff overlaid plywood for low gloss finishes on smooth or coated concrete	Standard, Medium Density, brown overlaid plywood for matte finishes with release coating factory applied	Standard, Economy, Medium Density, brown overlaid plywood for matte finishes with release coating factory applied
Panel Construction	Phenolic/Melamine, white, overlay on dense hardwood faced plywood with Doug Fir inner plys; 1 Step layup; Made in the USA; Meets PS 1-07	Phenolic Surface Film (PSF), overlay on dense hardwood faced plywood with D Fir inner plys; 2 Step layup; Made in the USA; Meets PS 1-07	High Density overlay on dense hardwood faced plywood with D Fir inner plys; 2 Step layup; Made in the USA; Meets PS 1-07	High Density overlay on dense hardwood faced plywood with Doug Fir/Hemlock inner plys; 1 Step layup; Made in the USA; Meets PS 1-07	High Density, 100 overlay on Doug Fir/Hemlock plywood; 1 Step layup; Made in the USA; Meets PS 1-07	Medium Density, Dyne 333 overlay on Doug Fir/Hemlock plywood; 1 Step layup; Made in the USA; Meets PS 1-07	Medium Density overlay on Doug Fir/Hemlock plywood; 1 Step layup; Made in the USA; Meets PS 1-07
Glue bond	Waterproof	Waterproof	Waterproof	Waterproof	Waterproof	Waterproof	Waterproof
Moisture Resistance - Cobb 8 hour soak	1.42 g/sq. ft.	1.09 g/sq. ft.	2.23 g/sq. ft.	2.78 g/sq. ft.	3.09 g/sq. ft.	4.5 g/sq. ft.	6.88 g/sq. ft.
Working Faces	1 side only with HDO backer	1 or 2 sides 1 side with HDO backer	1 or 2 sides 1 side with HDO backer	1 or 2 sides 1 side with HDO backer	1 side only with HDO backer	1 or 2 sides 1 side with Fir back	1 side only with Fir back
Gloss Level of Concrete Surface	Gloss	High-Gloss	Semi-Gloss	Semi-Gloss	Low-Gloss	Matte	Matte
Wood Grain Transfer to Concrete Surface	Slight	Minimal	Minimal	Slight	Moderate	Moderate	Moderate to Heavy
Wood Defect Transfer to Concrete Surface	Minimal, No football Patches	Minimal – No football patches	Minimal – No football patches	Minimal – No football patches	Slight	Moderate	Moderate to Heavy
Sugaring	None	None	None	None	None	None	None
Maintenance	Very Little	Very Little	Very Little	Very Little	Very Little	Occasional	Occasional
Working Edges	Sawn/Sealed - Gray Seal All edges	Sawn/Sealed - Gray Seal All edges	Sawn/Sealed - Gray Seal All edges	Sawn/Sealed - Gray Seal All edges	Sawn/Sealed - Blue Seal All edges	Sawn/Sealed - Gray Seal All edges	Sawn/Sealed - Blue Seal All edges
ARACE Alkaline Resistance (300=best, 0=none)	270	150	256	221	90	85	45
Strength Class/Stiffness	Struct 1	Struct 1	Struct 1	Struct 1/Class 1	Class 1	Struct 1/Class 1	Class 1
Allowable Pressure (270 3/4" @ 12" OC (face grain perpendicular to supports))	1105 PSF	1105 PSF	1105 PSF	Struct 1= 1105 PSF Class 1 = 885 PSF	885 PSF	Struct 1= 1105 PSF Class 1 = 885 PSF	885 PSF
Pour Range:	Engineered Systems: Up to 225 Gang Forms: Up to 100 Job Built: Up to 75	Up to 150 Up to 50 Up to 30	Up to 200 Up to 75 Up to 50	Up to 150 Up to 50 Up to 30	Not Recommended Up to 30 Up to 20	Not Recommended Up to 20 Up to 10	Not Recommended Up to 10 Up to 5
Release Agent	Not Factory Treated; Use Nox-Crete PCE/PCS	Not Factory Treated; Use Nox-Crete PCE/PCS	Not Factory Treated; Use Nox-Crete PCE/PCS	Not Factory Treated; Use Nox-Crete PCE/PCS	Not Factory Treated; Use Nox-Crete PCE/PCS	Factory Treated Nox-Crete FormCoat	Factory Treated; Use Nox-Crete FormCoat
Recoating Required	Little, before each pour	Little, before each pour	Light, before each pour	Light, before each pour	Light, before each pour	Light, before each pour	Light, before each pour
Thicknesses	1/2", 5/8", 3/4" & 1-1/8"	1/2", 5/8", 3/4" & 1-1/8"	1/2", 5/8", 3/4" & 1-1/8"	1/2", 5/8", 3/4" & 1-1/8"	1/2", 5/8" & 3/4"	1/2", 5/8", 3/4" & 1-1/8"	3/4" only
Widths and Lengths	2' & 4' X 8'	2' & 4' X 8'	2' & 4' X 8'	2' & 4' X 8' & 10'	4' X 8'	2' & 4' X 8' & 10'	4' X 8'
Thickness Tolerance	+/- 1/32"	+/- 1/64"	+/- 1/64"	+/- 1/32"	+/- 1/32"	+/- 1/32"	+/- 1/32"
Formaldehyde	0.01	< 0.01	< 0.01	< 0.01	< 0.01	0.03	0.01



### Environmental Impact

Olympic Panel produces overlaid plywood from veneer peeled at the Olympic plant and from purchased veneer. All veneer and plywood panels are produced in accordance with the following principals:

- Logs originate in sustainable, secondary growth forests which are managed according to Federal and State laws and regulations.
- Olympic Panel uses energy efficient, environmental control technology to reduce emissions below federal and state guidelines.
- Olympic Panel uses process by-products to produce energy.
- Olympic's products are renewable, biodegradable and recyclable.

### Limitations:

Do not exceed design limitations imposed by the load span table. Conform to concrete form design procedures based on American Concrete Institute (ACI) standard 347-04. Release agents are required. Do not employ used concrete form for structural applications. Do not paint or laminate this panel without surface preparation.

Olympic Panel Products LLC and Olympic Panel are registered trademarks of Olympic Panel Products LLC.  
© 2007 Olympic Panel Products LLC.

All Rights Reserved. Printed in the USA.  
Specifications subject to change without notice.  
Effective: 8/2007; Replaces: 6/2007

Olympic Panel Products LLC

204 E. Railroad Avenue  
Shelton, WA 98584

Sales phone: 800-445-2442

Sales Fax: 360-432-5081

[www.olypanel.com](http://www.olypanel.com)

# PREMIUM CONCRETE FORM

## Barrier Film

**Product:** Exclusive, premium Phenolic/Melamine, White overlaid plywood with superior alkalinity resistance & durability for glossy finishes.



### Features and Benefits

- For high alkaline & abrasive concrete
- White reflects heat for controlled pours
- Best in Table, Gang & Engineered Systems
- Minimal wood grain & no patch transfer
- Controlled hydration reduces Tiger Striping
- Balanced construction ensures panel stability
- Increased # of pours & reduced cost/pour

### Specifications:

Strength Class/Stiffness: Struct 1 equivalent  
Thicknesses: 1/2", 5/8", 3/4" & 1-1/8" Panel Sizes: 2' & 4' X 8'

## MultiPour

**Product:** Premium, High Density, Buff overlaid plywood with excellent surface durability for semi gloss finishes.



### Features and Benefits

For architectural - smooth, textured or coated concrete  
Reduces potential vibrator damage  
Balanced construction ensures panel stability  
Minimal wood grain & no patch transfer  
Increased # of pours & reduced cost/pour

### Specifications:

Strength Class/Stiffness: Struct 1 equivalent  
Thicknesses: 1/2", 5/8", 3/4" & 1-1/8" Panel Sizes: 2' & 4' X 8'

## Multipour Plus

**Product:** Premium Phenolic Surface Film, brown overlaid plywood with good surface durability for high gloss finishes on vertical concrete



### Features and Benefits

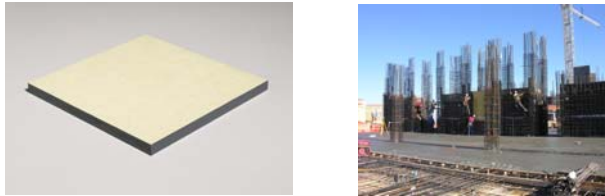
- For architectural high gloss concrete
- Vertical application only
- Balanced construction ensures panel stability
- Minimal wood grain & no patch transfer
- Increased # of pours & reduced cost/pour

### Specifications:

Strength Class/Stiffness: Struct 1 equivalent  
Thicknesses: 1/2", 5/8", 3/4" & 1-1/8" Panel Sizes: 2' & 4' X 8'

## Classic HDO

**Product:** Premium, High Density, Buff overlaid plywood with good surface durability for semi gloss finishes.



### Features and Benefits

- For smooth coated concrete and engineered systems
- Enhanced alkalinity resistance vs. Doug Fir faced HDO
- Controlled hydration reduces Tiger Striping
- Balanced construction ensures panel stability
- Minimal wood grain & no patch transfer
- Increased # of pours & reduced cost/pour

### Specifications:

Strength Class/Stiffness: Struct 1 equivalent or Class 1  
Thicknesses: 1/2", 5/8", 3/4" & 1-1/8" Panel Sizes: 2' & 4' X 8'

# STANDARD CONCRETE FORM

## Basic HDO

**Product:** Standard, High Density, buff overlaid plywood for low gloss finishes on smooth or coated concrete

### Features and Benefits

- Standard 100/30 performance
- Tough, anti-abrasion overlay
- Smooth finish; moderate grain & slight patch transfer
- Balanced construction ensures panel stability
- Increased # of pours & reduced cost/pour

### Specifications:

Strength Class/Stiffness: Class 1  
Thicknesses: 1/2", 5/8", & 3/4" Panel Sizes: 4' X 8'

## B-Matte

**Product:** Standard, Medium Density, brown overlaid plywood for matte finishes; release coating factory applied

### Features and Benefits

- Matte finish for coated concrete
- Factory applied Nox-Crete FormCoat
- Twice the form oil retention of regular MDO's.
- Balanced construction ensures panel stability
- Increased # of pours & reduced cost/pour

### Specifications:

Strength Class/Stiffness: Struct 1 equivalent or Class 1  
Thicknesses: 1/2", 5/8", 3/4" & 1-1/8" Panel Sizes: 2' & 4' X 8' & 10'

## Basic MDO

**Product:** Standard, Economy, Medium Density, brown overlaid plywood for matte finishes with release coating factory applied.

### Features and Benefits

- Matte finish for coated concrete
- Factory applied Nox-Crete FormCoat
- Increased # of pours & reduced cost/pour vs. BBOES

### Specifications:

Strength Class/Stiffness: Class 1  
Thicknesses: 3/4" only Panel Sizes: 4' X 8'